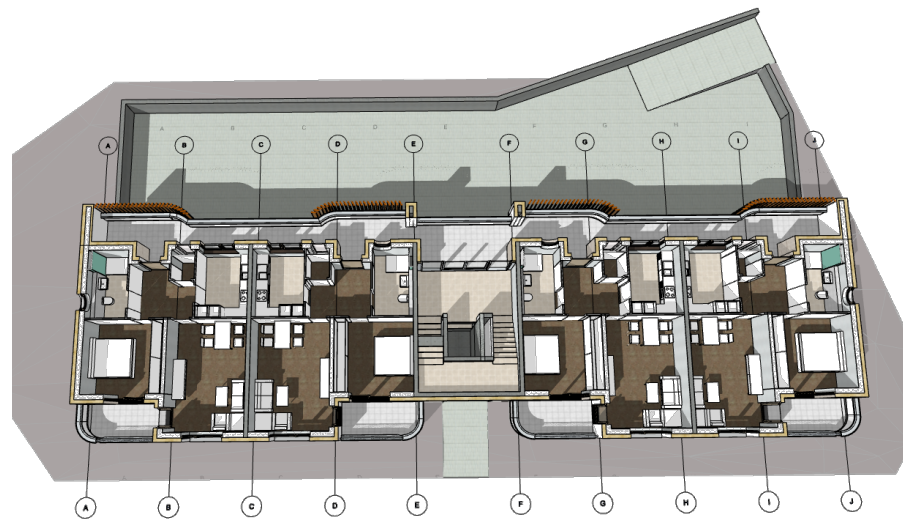


A photograph of a modern building's exterior. On the left, a curved white balcony with a grey metal railing is visible. The main wall is made of light-colored, rectangular bricks. A large, circular window is set into the brick wall, featuring a white frame and a wooden interior structure. A vertical grey pipe runs down the side of the brick wall. The sky is overcast and grey.



This architectural floor plan illustrates a residential building layout. The plan is symmetrical around a central vertical axis. At the top, there is a central staircase and a small courtyard area with a fountain. The building is divided into several units, each with its own entrance. The units include bedrooms, living areas, and bathrooms. The central part of the plan features a large open space, likely a common area or a large living space. The plan is detailed with furniture, fixtures, and architectural elements like walls, doors, and windows.

A close-up photograph of a window sill and frame. The window frame is made of light-colored wood. The sill is a flat, grey metal surface. The wall is constructed from light-colored bricks with dark mortar. The window glass reflects a white building and a roof.

Detailfoto